

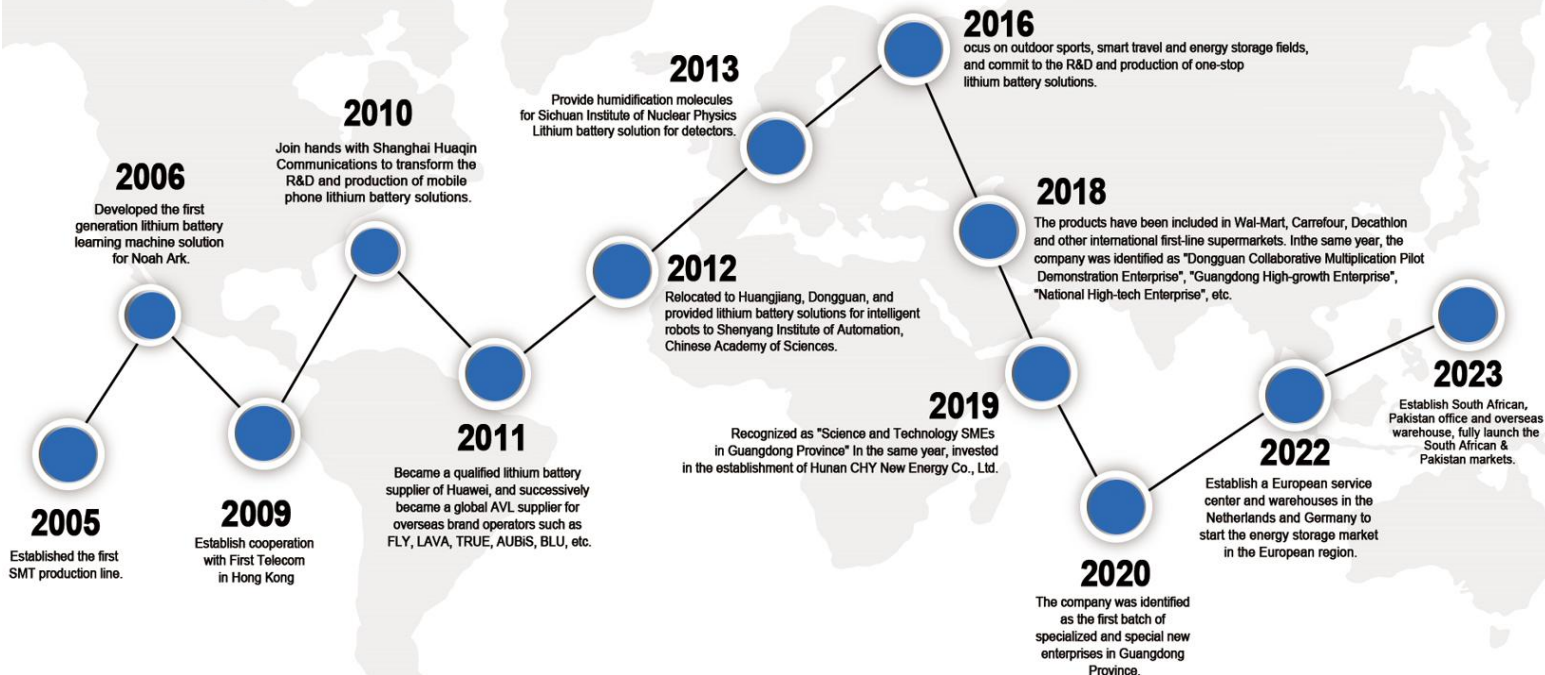
# ***TIGFOX***

**PRODUCT  
INTRODUCTION**



Park-4

# COMPANY DEVELOPMENT HISTORY



# Dongguan CHY Battery Technology Co.,Ltd

The company was first established in June 2005.

Currently located at No. 2 Qinghe Road, Huangjingkeng Village,  
Huangjiang Town, Dongguan City, Guangdong Province



**Established Time**

Established in June of 2005



**Plant Area**

50,200m<sup>2</sup>



**Annual Sales**

\$80 million USD in 2023



**Employee**

Over 600, including 48  
Engineers



**Certifications**

Factory certified by  
ISO9001 & ISO14001 & BSCI  
Products: UN38.3, UL, CE,  
IEC,FCC, ROHS, etc



**Our main service**

Renewable energy storage  
solutions of PV system





# CATALOG

**Solar Power Systems For Home**

**Energy Storage Li-ion Battery Series**

**E-bike Battery Series**

**Customization Service**



# T500



Home



Outdoor



Solar Panels



Multiple Sockets

## Main Features

- Mainly suitable for normal rural families and apartments.
- Solar power system with UPS function.
- Portable power station.
- After-sales can be solved in 24 hrs.



## Solar Power Systems For Home

Mode	<b>T500</b>
Battery	
Standard Voltage	10.8Vdc
Voltage Range	9.0~12.6Vdc
Capacity	540Wh
Max Discharge Rate	3C
Max Charge Rate	0.5C
Battery Type	Li-ion
AC Output	
Rated Power	500W
Current Regulating Power.	750W
Output Voltage	220/230/240Vac
Output Current	2.3A
Rated Frequency	50Hz
VTHD	<3%
Output Waveform	Pure Sine Wave
Output Type	AC Socket x 1
Max. Efficiency	93%
AC Input	
AC Input Voltage Range	100-240Vac (charger)
AC Input Frequency	50/60HZ
AC Charging Power.	115.9W
Max. AC Charging Current (Battery)	9.2A
PV Input	
Max. PV Charging Power	120W
Max. PV Voltage	24Vdc
MPPT Voltage Range.	12~24Vdc
Max. PV Charging Current	8A
Operation Condition	
Working Temperature	0~50°C
Storage Temperature	-15-60°C
Humidity	5%~95%
Cooling Down Strategy	Fan
Net weight/N. W.	5.51kg
Product Size (WxDxH)	210*190*224mm
Packaging	Carton
G. W. (Including accessories)	6.71kg
Carton Size [W X D X H]	256*250*258mm
IP Rating	IP21
Communication	/
Warranty	2 years

# T1000



Home



Outdoor



Solar Panels



Multiple Sockets

## Main Features

- Mainly suitable for normal families, apartments and shops.
- Solar power system with UPS function.
- Portable power station.
- After-sales can be solved in 24 hrs.



## Solar Power Systems For Home

Mode	T1000
Battery	
Standard Voltage	25.6Vdc
Voltage Range	22.4~28.8Vdc
Capacity	1000Wh
Max Discharge Rate	3C
Max Charge Rate	1C
Battery Type	Li-Ion
AC Output	
Rated Power	1000W
Current Regulating Power.	2000W
Output Voltage	220/230/240Vac
Output Current	4.5A
Rated Frequency	50/60Hz
VTHD	<3%
Output Waveform	Pure Sine Wave
Output Type	AC Socket x 3
Maximum Efficiency	93%
AC Input	
AC Input Voltage Range	90~300Vac
AC Input Frequency	50/60HZ
AC Charging Power.	600W
Max. AC Charging Current (Battery)	24A
PV Input	
Max. PV Charging Power	200W
Max. PV Voltage	28Vdc
MPPT Voltage Range.	12~28Vdc
Max. PV Charging Current	8A
Operation Condition	
Working Temperature	0~50°C
Storage Temperature	-15~60°C
Humidity	5%~95%
Cooling Down Strategy	Fan
Net weight/N. W.	12.85kg
Product Size (WxDxH)	350*221*251mm
Packaging	Carton
G. W. (Including Accessories)	13.75kg
Carton Size [W X D X H]	425*280*325mm
IP Rating	IP21
Communication	/
Warranty	2 years

# T2500



Home



Outdoor



Solar Panels



Multiple Sockets

## Main Features

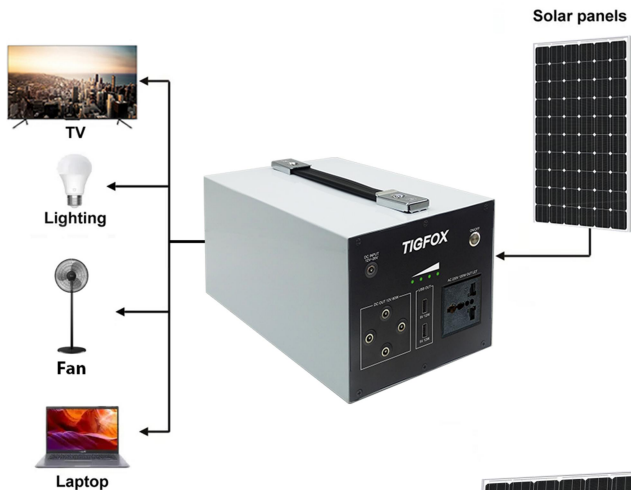
- Mainly suitable for rich families, apartments and Barbecue.
- Solar power system with UPS function.
- Portable power station.
- After-sales can be solved in 24 hrs.



## Solar Power Systems For Home

Mode	T2500(Movable)
Battery	
Standard Voltage	51.2Vdc
Voltage Range	44.8~57.6Vdc
Capacity	2560Wh
Max Discharge Rate	1.5C
Max Charge Rate	1C
Battery Type	Li-Ion
AC Output	
Rated Power	2500W
Current Regulating Power	5000W
Output Voltage	220/230/240Vac
Output Current	11.4A
Rated Frequency	50/60Hz
VTHD	<3%
Output Waveform	Pure Sine Wave
Output Type	AC Socket
Maximum Efficiency	93%
AC input	
AC Input Voltage Range	170~280Vac
AC Input Frequency	50/60HZ
AC Charging Power	1300W
Max. AC Charging Current (Battery)	29A
PV input	
Max. PV Charging Power.	500W
Max. PV Voltage.	72Vdc
MPPT Voltage Range	10~75Vdc
Max. PV Charging Current.	10A
Operation Condition	
Working Temperature	0~50°C
Storage Temperature	-15~60°C
Humidity	5%~95%
Cooling Down Strategy	Fan
Net weight/N. W.	33kgs
Product Size (WxDxH)	480*205*315mm
Packaging	Carton
G. W. (including accessories)	34.3kg
Carton Size [W X D X H]	545*285*445mm
IP Rating	IP21
Communication	/
Warranty	2 Years

## TM300



### Main Features

- Mainly suitable for home lighting and TV.
- Whole system including
  - 10w led bulb built-in battery :2pcs;
  - 10w led bulb with 5m cable:1pcs;
- After-sales can be solved in 24 hrs.

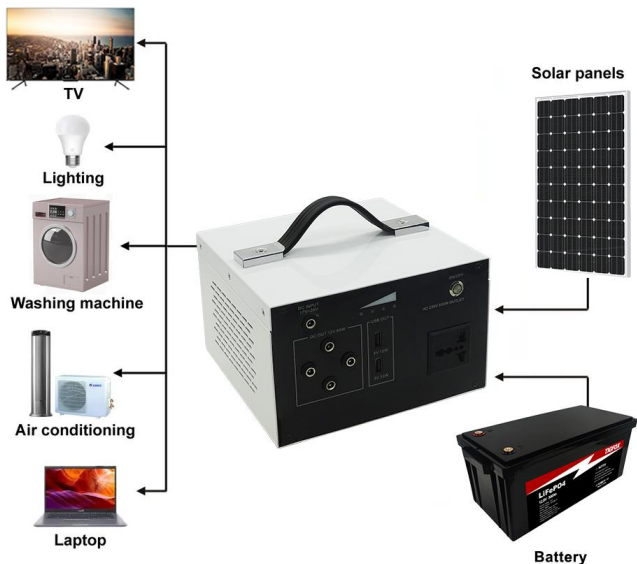


## Solar Power Systems For Home

Model		TM300
Battery	Nominal Voltage	12Vdc
	Voltage Rang	9~14.4Vdc
	Capacity	300Wh
	Max Discharge Rate	1C
	Max Charge Rate	1C
AC Output	Rated Power	120W
	Peak power	150W
	Output Voltage	230Vac
	Output Current	0.43A
	Rated Frequency	50HZ
	Output Waveform	Modified Sine Wave
PV Input	Efficiency	93%
	Max.PV Power	120W
	Max. PV Voltage	26Vdc
	MPPT Working Voltage Range	17.5~26Vdc
DC Output	Max.PV Charging Current	5.7A
	DC Output	4*12VDC MAX60W
	USB-A Output	2*5VDC 2.4A
Operation Condition	Working Temperature	0~50℃
	Storage Temperature	-15~60℃
	Humidity	5%~95%
	Cooling Down Strategy	Natural air cooling
	N.W.	9.2kg
	Product Size(L*W*H)	233*170*150mm
	Packaging	Carton
	G.W.	10.3kg
	Carton Size	290*210*200mm
	IP Rating	IP21
	Warranty	2 Years



## TM500



### Main Features

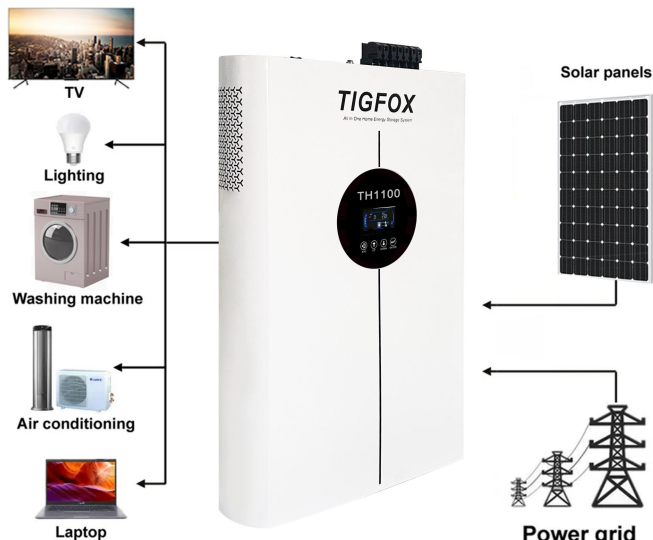
- Mainly suitable for home lighting and TV.
- Compatible with 80% solar battery.
- After-sales can be solved in 24 hrs.



## Solar Power Systems For Home

Model	TM500	
Battery Input	Nominal Voltage	12Vdc
	Voltage Rang	9~14.4Vdc
	Capacity suggestion	≥240Wh @ 12V 20Ah
	MinDischarge current	50A
	MinCharge current	20A
AC Output	Rated Power	500W
	Peak power	750W
	Output Voltage	230Vac
	Output Current	2.2A
	Rated Frequency	50HZ
	Output Waveform	Modified Sine Wave
PV Input	Efficiency	93%
	Max.PV Power	100W
	Max. PV Voltage	26Vdc
	MPPT Working Voltage Range	17.5 ~ 26Vdc
DC Output	Max.PV Charging Current	5.7A
	DC Output	2*12VDC5A
	USB-A Output	2*5VDC2.4A
Operation Condition	Working Temperature	0~50℃
	Storage Temperature	-15~60℃
	Humidity	5%~95%
	Cooling Down Strategy	Natural air cooling
	N.W.	2.6kg
	Product Size(L*W*H)	200*200*113mm
	Packaging	Carton
	G.W.	3.5kg
	Carton Size	/
	IP Rating	IP21
	Warranty	5 Years

## TH1100



### Main Features

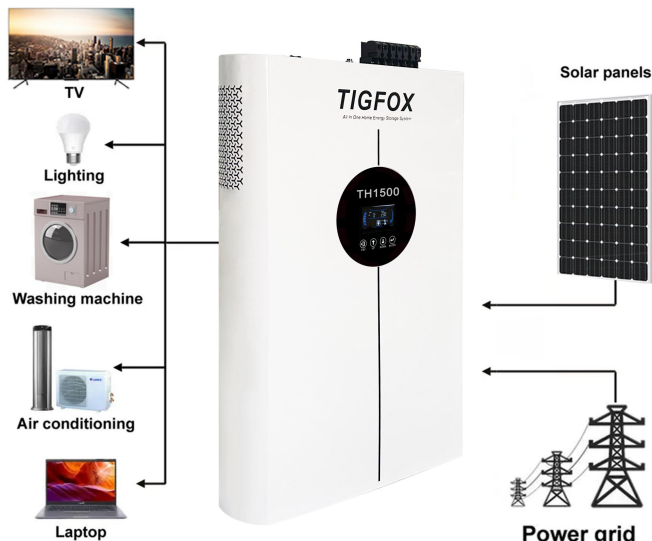
- Suitable for normal families and high floor flat.
- Solar power system with UPS function.
- Support remote monitoring.
- After-sales can be solved in 24 hrs.



## Solar Power Systems For Home

Mode	TH1100
Battery	
Standard Voltage	25.6Vdc
Voltage Range	22.4~28.8Vdc
Capacity	1.28KWh
Max Discharge Rate	1.5C
Max Charge Rate	1C
Battery Type	Li-ion (LFP)
AC Output	
Rated Power	1000W
Current Regulating Power	2000W
Output Voltage	220/230/240Vac
Output Current	5.5A
Rated Frequency	50/60HZ
VTHD	<3%
Output Waveform	Pure Sine Wave
Output Type	AC Terminals
Maximum Efficiency	93%
AC Input	
AC Input Voltage Range	176-264VAC
AC Input Frequency	50/60HZ
Max.AC Charging Current (Battery)	20A(0~20A) Adjustable
PV Input	
Max. PV Power	500W
Max. PV Voltage	95Vdc
MPPT Working Voltage Range	36~90Vdc
Max.PV Charging Current (Battery)	10A
Operation Condition	
Working Temperature	0~50°C
Storage Temperature	-15~60°C
Humidity	5%~95%
Cooling Down Strategy	Fan
Installation Method	Wall-Mounted
Net weight N. W.	26kg
Product Size [W * D * H]	435*105*645mm
Packaging	Carton
G. W. (Including Accessories)	30kg
IP Rating	IP21
Communication	USB/RS232/WIFI
Warranty	5 Years

## TH1500



### Main Features

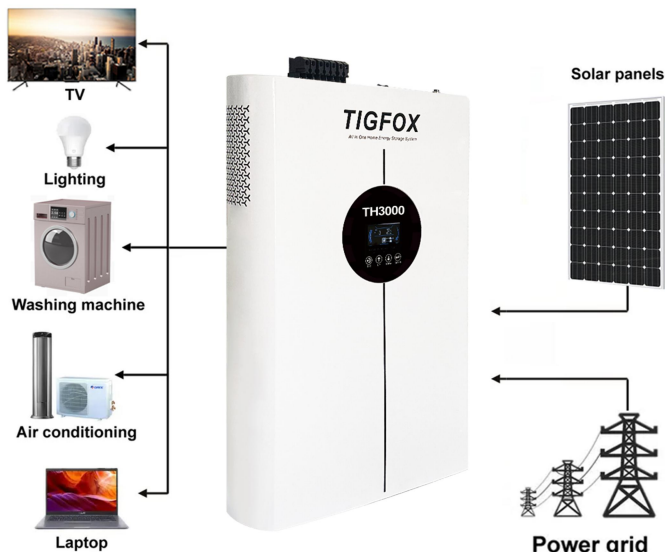
- Suitable for normal families and high floor flat.
- Solar power system with UPS function.
- Support remote monitoring.
- After-sales can be solved in 24 hrs.



## Solar Power Systems For Home

Mode	TH1500
Battery	
Standard Voltage	25.6Vdc
Voltage Range	22.4~28.8Vdc
Capacity	1.35KWh
Max Discharge Rate	1.5C
Max Charge Rate	1C
Battery Type	LI-ion (LFP)
AC Output	
Rated Power	1200W
Current Regulating Power	2400W
Output Voltage	220/230/240Vac
Output Current	5.5A
Rated Frequency	50/60HZ
VTHD	<3%
Output Waveform	Pure Sine Wave
Output Type	AC Terminals
Maximum Efficiency	93%
AC Input	
AC Input Voltage Range	176-264VAC
AC Input Frequency	50/60HZ
Max.AC Charging Current (Battery)	20A(0~20A) Adjustable
PV Input	
Max. PV Power.	700W
Max. PV Voltage	95Vdc
MPPT Working Voltage Range.	36~90Vdc
Max.PV Charging Current (Battery)	10A
Operation Condition	
Working Temperature	0~50°C
Storage Temperature	-15~60°C
Humidity	5%~95%
Cooling Down Strategy	Fan
Installation Method	Wall-Mounted
Net weight N. W.	26kg
Product Size [W * D * H]	435*105*645mm
Packaging	Carton
G. W. (Including Accessories)	30kg
IP Rating	IP21
Communication	USB/RS232/WIFI
Warranty	5 Years

## TH3000



### Main Features

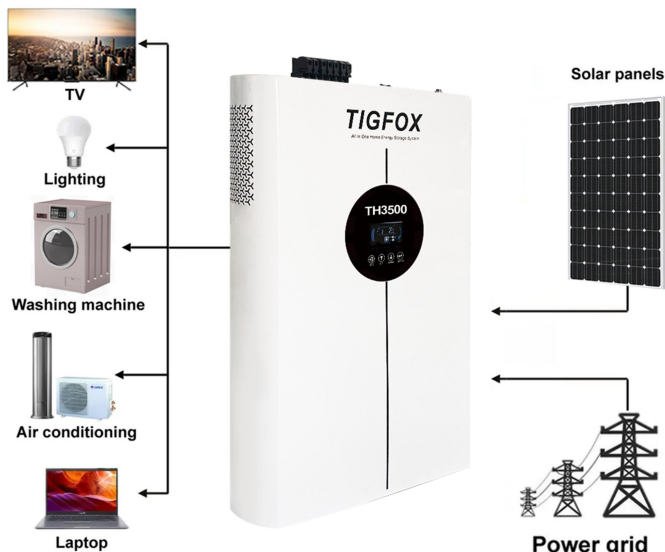
- Suitable for normal families and high floor flat.
- Solar power system with UPS function.
- Support remote monitoring.
- After-sales can be solved in 24 hrs.

## Solar Power Systems For Home

Mode	TH3000
Battery	
Standard Voltage	25.6Vdc
Voltage Range	22.4~28.8Vdc
Capacity	2.56kWh
Max Discharge Rate	1.5C
Max Charge Rate	1C
Battery Type	Li-ion (LFP)
AC Output	
Rated Power	3500W
Current Regulating Power	7000W
Output Voltage	220/230/240Vac
Output Current	15.2A
Rated Frequency	50/60HZ
VTHD	<3%
Output Waveform	Pure Sine Wave
Output Type	AC Terminals
Maximum Efficiency	93%
AC Input	
AC Input Voltage Range	176-264VAC
AC Input Frequency	50/60HZ
Max AC Charging Current (Battery)	40A(0~40A) Adjustable
PV Input	
Max. PV Power	3500W
Max. PV Voltage	450Vdc
MPPT Working Voltage Range	120-450Vdc
Max PV Charging Current (Battery)	80A
Operation Condition	
Working Temperature	0~50°C
Storage Temperature	-15~60°C
Humidity	5%~95%
Cooling Down Strategy	Fan
Installation Method	Wall-Mounted
Net weight N. W.	36kg
Product Size [W * D * H]	798*520*102mm
Packaging	Carton
G. W. (Including Accessories)	42.2kg
Carton Size [L * W * H]	860*555*140mm
IP Rating	IP21
Communication	USB/RS232/WIFI
Warranty	5 Years



## TH3500



### Main Features

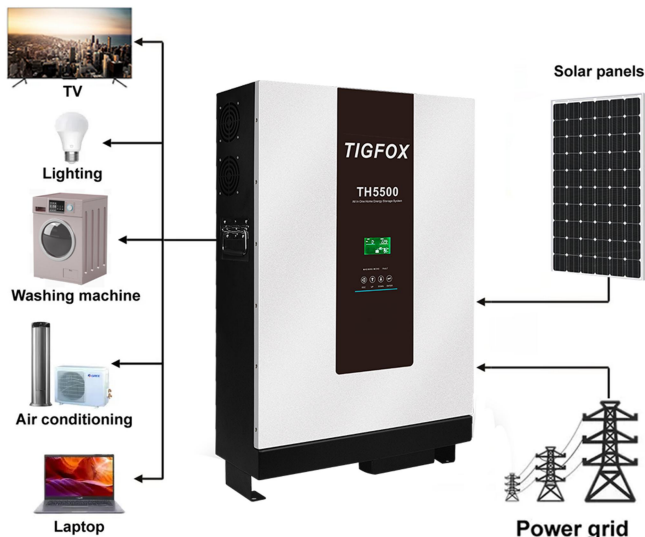
- Suitable for middle income families and high power requirement families.
- Solar power system with UPS function.
- Support remote monitoring.
- After-sales can be solved in 24 hrs.



## Solar Power Systems For Home

Mode	TH3500
Battery	
Standard Voltage	25.6Vdc
Voltage Range	22.4~28.8Vdc
Capacity	3.8KWh
Max Discharge Rate	1.5C
Max Charge Rate	1C
Battery Type	Li-ion (LFP)
AC Output	
Rated Power	3500W
Current Regulating Power	7000W
Output Voltage	220/230/240Vac
Output Current	15.2A
Rated Frequency	50/60HZ
VTHD	<3%
Output Waveform	Pure Sine Wave
Output Type	AC Terminals
Maximum Efficiency	93%
AC Input	
AC Input Voltage Range	176-264VAC
AC Input Frequency	50/60HZ
Max AC Charging Current (Battery)	60A(0~60A) Adjustable
PV Input	
Max. PV Power.	3500W
Max. PV Voltage	450Vdc
MPPT Working Voltage Range.	120~450Vdc
Max PV Charging Current (Battery)	80A
Operation Condition	
Working Temperature	0~50°C
Storage Temperature	-15~60°C
Humidity	5%~95%
Cooling Down Strategy	Fan
Installation Method	Wall-Mounted
Net weight N. W.	41kg
Product Size [W * D * H]	798*520*137mm
Packaging	Carton
G. W. (Including Accessories)	49.5kg
Carton Size [L * W * H]	860*560*170mm
IP Rating	IP21
Communication	WIFI/RS485/CAN
Warranty	5 Years

## TH5500



### Main Features

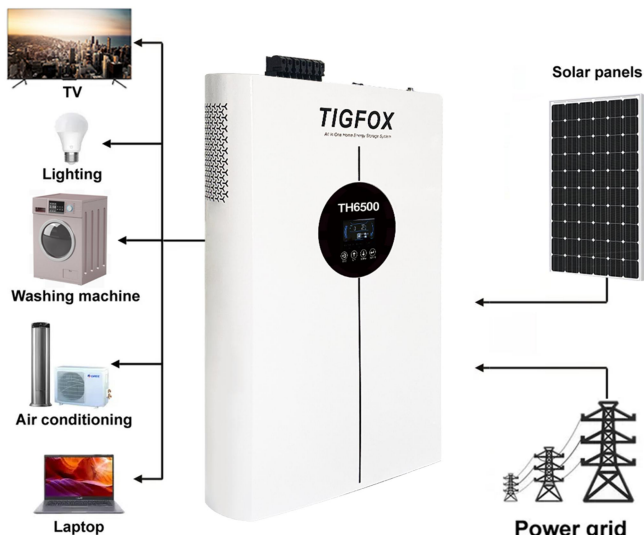
- Suitable for large families and apartments where there are high power requirements.
- Solar power system with UPS function.
- Support remote monitoring.
- After-sales can be solved in 24 hrs.



## Solar Power Systems For Home

Mode	TH5500
Battery	
Standard Voltage	51.2Vdc
Voltage Range	44.8-57.6Vdc
Capacity	5.12KWh
Max Discharge Rate	1.5C
Max Charge Rate	1C
Battery Type	Li-ion(LFP)
AC Output	
Rated Power	5500W
Current Regulating Power	11000W
Output Voltage	220/230/240Vac
Output Current	23.9A
Rated Frequency	50/60HZ
VTHD	<3%
Output Waveform	Pure Sine Wave
Output Type	AC Terminals
Maximum Efficiency	93%
AC Input	
AC Input Voltage Range	176-264VAC
AC Input Frequency	50/60HZ
Max.AC Charging Current (Battery)	60A(0~60A) Adjustable
PV Input	
Max. PV Power.	5500W
Max. PV Voltage	450Vdc
MPPT Working Voltage Range.	120~450Vdc
Max.PV Charging Current (Battery)	80A
Operation Condition	
Working Temperature	0~50°C
Storage Temperature	-15~60°C
Humidity	5%~95%
Cooling Down Strategy	Fan
Installation Method	Wall-Mounted
Net weight N. W.	57kg
Product Size [W * D * H]	530*170*835mm
Packaging	Carton
G. W. (Including Accessories)	65.5kg
Carton Size [L * W * H]	900*600*260mm
IP Rating	IP21
Communication	WIFI/RS485/CAN
Warranty	5 Years

## TH6500



### Main Features

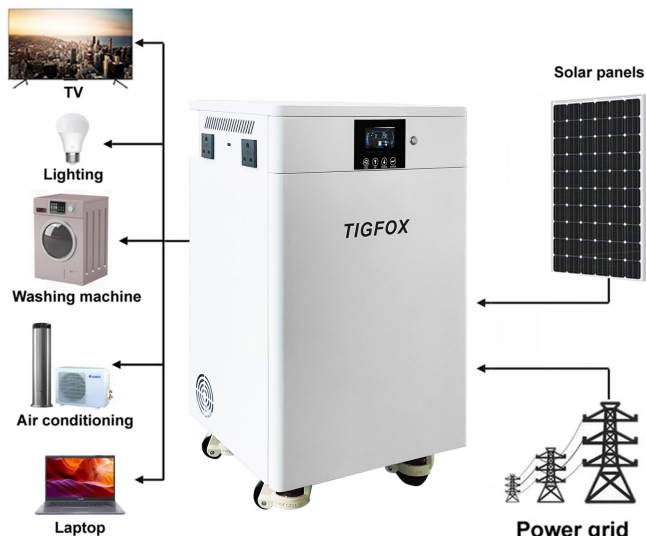
- Suitable for large families and villas where there are high power requirements.
- Solar power system with UPS function.
- Support remote monitoring.
- After-sales can be solved in 24 hrs.



## Solar Power Systems For Home

Mode	TH6500
Battery	
Standard Voltage	51.2Vdc
Voltage Range	44.8~57.6Vdc
Capacity	7.6KWh
Max Discharge Rate	1.5C
Max Charge Rate	1C
Battery Type	Li-ion(LFP)
AC Output	
Rated Power	6500W
Current Regulating Power	13000W
Output Voltage	220/230/240Vac
Output Current	28.2A
Rated Frequency	50/60HZ
VTHD	<3%
Output Waveform	Pure Sine Wave
Output Type	AC Terminals
Maximum Efficiency	93%
AC Input	
AC Input Voltage Range	176-264VAC
AC Input Frequency	50/60HZ
Max AC Charging Current (Battery)	60A(0~60A) Adjustable
PV Input	
Max. PV Power.	6500W
Max. PV Voltage	450Vdc
MPPT Working Voltage Range.	120~450Vdc
Max. PV Charging Current (Battery)	80A
Operation Condition	
Working Temperature	0~50°C
Storage Temperature	-15~60°C
Humidity	5%~95%
Cooling Down Strategy	Fan
Installation Method	Wall-Mounted
Net weight N. W.	78kg
Product Size [W * D * H]	835*535*182mm
Packaging	Carton
G. W. (Including Accessories)	85kg
Carton Size [L * W * H]	915*655*215mm
IP Rating	IP21
Communication	USB/RS232/WIFI
Warranty	5 Years

## TH8000/11000



### Main Features

- Suitable for big house and villas where there are high power requirements.
- Solar power system with UPS function.
- Support remote monitoring.
- After-sales can be solved in 24 hrs.



## Solar Power Systems For Home

Mode	TH8000	TH11000
Battery		
Standard Voltage	51.2Vdc	51.2Vdc
Voltage Range	44.8~57.6Vdc	44.8~57.6Vdc
Capacity	15.36KWh	15.36KWh
Max Discharge Rate	1.5C	1.5C
Max Charge Rate	1C	1C
Battery Type	Li-ion (LFP)	Li-ion (LFP)
AC Output		
Rated Power	8KW	11KW
Current Regulating Power	16KW	22KW
Output Voltage	220/230/240Vac	220/230/240Vac
Output Current	34.7A	34.7A
Rated Frequency	50/60HZ	50/60HZ
VTHD	<3%	<3%
Output Waveform	Pure Sine Wave	Pure Sine Wave
Output Type	AC Terminals	AC Terminals
Maximum Efficiency	93%	93%
AC Input		
AC Input Voltage Range	176-264VAC	176-264VAC
AC Input Frequency	50/60HZ	50/60HZ
Max.AC Charging Current (Battery)	100A(0~100A) Adjustable	100A(0~100A) Adjustable
PV Input		
Max. PV Power	8000W	8000W
Max. PV Voltage	450Vdc	450Vdc
MPPT Working Voltage Range	120~450Vdc	120~450Vdc
Max.PV Charging Current (Battery)	120A	120A
Operation Condition		
Working Temperature	0~50°C	0~50°C
Storage Temperature	-15~60°C	-15~60°C
Humidity	5%~95%	5%~95%
Cooling Down Strategy	Fan	Fan
Installation Method	Wall-Mounted	Wall-Mounted
Net weight N. W.	119.5kg	129.5kg
Product Size [L * W * H]	485*400*872mm	485*400*872mm
Packaging	wooden case	wooden case
G. W. (Including Accessories)	255kg	260kg
Carton Size [L * W * H]	575*480*1150mm	575*480*1150mm
IP Rating	IP21	IP21
Communication	USB/RS232/WIFI	USB/RS232/WIFI
Warranty	5 Years	5 Years



TB5120



Home



Adapt 80%



Battery

## Main Features

- Compatible with 80% solar inverters.
- Long lifespan, 6000 cycles.
- 5 years warranty.
- Warranty expires, enjoy trade-in discount.



## Energy Storage Li-ion Battery

Mode	TB5120
Battery	
Normal Voltage	51.2Vdc
Voltage Range	44.8 ~58.4V
Capacity	5120Wh
Max. Discharge Rate	1.5C
Max. Charge Rate	1C
Battery Type	Li-ion (LFP)
Operation Condition	
Charging Temperature	0~55°C
Discharging Temperature	-20~55°C
Storage Temperature	-20~45°C
Humidity	<95%
Cooling Down Strategy	Natural heat dissipation
Installation Method	Wall-Mounted
Weight	43kgs
Product Size (W*D*H)	625*390*210mm
Packaging	Carton
IP Rating	IP54
Communication Method	RS485/CAN
Warranty	5 Years

TB10240



Home



Adapt 80%



Battery

## Main Features

- Compatible with 80% solar inverters.
- Long lifespan, 6000 cycles.
- 5 years warranty.
- Warranty expires, enjoy trade-in discount.



## Energy Storage Li-ion Battery

Mode	TB10240
Battery	
Normal Voltage	51.2Vdc
Voltage Range	44.8 ~58.4V
Capacity	10240Wh
Max. Discharge Rate	1.5C
Max. Charge Rate	1C
Battery Type	Li-ion (LFP)
Operation Condition	
Charging Temperature	0~55°C
Discharging Temperature	-20~55°C
Storage Temperature	-20~45°C
Humidity	<95%
Cooling Down Strategy	Natural heat dissipation
Installation Method	Wall-Mounted
Weight	78kgs
Product Size (W*D*H)	915*540*210mm
Packaging	Carton
IP Rating	IP54
Communication Method	RS485/CAN
Warranty	5 Years

## TB5120 Plus



Home



Adapt 80%



Battery

### Main Features

- New material new technology.
- Compatible with 80% solar inverters.
- Long lifespan, 6000 cycles.
- 5 years warranty.
- Warranty expires, enjoy trade-in discount.



## Energy Storage Li-ion Battery

Mode	TB5120 Plus
Ultra Slim LiFePO4 Battery	
Nominal Capacity	5.12kWh
Usable Capacity	4.86kWh (95% DOD)
Installation Type	Wall Mounted
Battery type-Chemistry	LiFePO4
Nominal Voltage	51.2V
Nominal Capacity	100Ah
Energy Density	5120Wh
Charging rate	1C
Discharge rate	1.5C
Dimensions(LxWxH)	780*695*68mm
Weight(Approx.)	49kgs
Working Voltage	43.2 ~58.4Vdc
Max. Charge Current	100A
Max. Discharge Current	150A
Communication Port	RS485, CAN, DRY CONTACT, RS232
Storage Temperature	-10°C~35°C (Recommended)
Working Temperature	Charging: 0°C ~ 50°C Discharging: -20°C ~ 60°C
Working Humidity	≤95% (RH) No Condensation
Storage Humidity	≤85% (RH)
Working Altitude	≤2000m
Ingress Protection	IP54
Design Life	10 Years (25°C)
Cycle Life	> 6000 (25°C) , 60% EOL
Scalability	Module: Max. 16 in parallel (Capacity 81.92kWh)
Certification	CE, IEC62619, UN38.3 (upcoming)

## Rack Mounted Battery



Home



Stackable



Adapt 99%



Battery

### Main Features

- Stackable Battery
- Compatible with 80% solar inverters.
- Long lifespan, 6000 cycles.
- 5 years warranty.
- Warranty expires, enjoy trade-in discount.



## Energy Storage Li-ion Battery

Mode	<b>TB5120 Rack-mounted</b>
<b>Battery</b>	
Normal Voltage	51.2Vdc
Voltage Range	44.8 ~ 58.4V
Capacity	5120Wh
Max. Discharge Rate	1.5C
Max. Charge Rate	1C
Battery Type	Li-ion (LFP)
<b>Operation Condition</b>	
Charging Temperature	0~55°C
Discharging Temperature	-20~55°C
Storage Temperature	-20~45°C
Humidity	<95%
Cooling Down Strategy	Natural heat dissipation
Installation Method	Rack-Mounted
Weight	43kgs
Product Size (W*D*H)	483*180*400mm
Packaging	Carton
IP Rating	IP54
CommunicationMethod	RS485/CAN
Warranty	5 Years



## Stackable Battery



Home



Stackable



Adapt 99%



Battery

### Main Features

- Stackable Battery
- Compatible with 80% solar inverters.
- Long lifespan, 6000 cycles.
- 5 years warranty.
- Warranty expires, enjoy trade-in discount.



## Energy Storage Li-ion Battery

Mode	TB5120 Stackable Battery
Battery	
Normal Voltage	51.2Vdc
Voltage Range	44.8 ~58.4V
Capacity	5120Wh
Max. Discharge Rate	1.5C
Max. Charge Rate	1C
Battery Type	Li-ion (LFP)
Operation Condition	
Charging Temperature	0~55℃
Discharging Temperature	-20~55℃
Storage Temperature	-20~45℃
Humidity	<95%
Cooling Down Strategy	Natural heat dissipation
Installation Method	Stack-Mounted
Weight	43kgs
Product Size (W*D*H)	550*280*470mm
Packaging	Carton
IP Rating	IP54
Communication Method	RS485/CAN
Warranty	5 Years

## Cube Lithium Battery



Home



Stackable



Battery

## Main Features

- ABS material and traditional technology
- Support parallel to expand capacity.
- Long lifespan, 6000 cycles.
- 3 years warranty.



## Energy Storage Li-ion Battery

Mode	24V100Ah	48V100Ah
Battery		
Normal Voltage	25.6Vdc	51.2Vdc
Voltage Range	22.4~28.8Vdc	44.8 ~58.4V
Capacity	2560Wh	5120Wh
Max. Discharge Rate	1.5C	1.5C
Max. Charge Rate	1C	1C
Battery Type	Li-ion(LFP)	Li-ion (LFP)
Operation Condition		
Charging Temperature	0~55°C	0~55°C
Discharging Temperature	-20~55°C	-20~55°C
Storage Temperature	-20~45°C	-20~45°C
Humidity	<95%	<95%
Cooling Down Strategy	Natural heat dissipation	Natural heat dissipation
Installation Method	Floor-standing	Floor-standing
Weight	27kgs	43kgs
Product Size (W*D*H)	523*252*220mm	523*400*220mm
Packaging	Carton	Carton
IP Rating	IP65	IP65
Warranty	3 Years	3 Years

## Cube Lithium Battery



Home



Stackable



Battery

## Main Features

- ABS material and traditional technology
- Support parallel to expand capacity.
- Long lifespan, 6000 cycles.
- 3 years warranty.



## Energy Storage Li-ion Battery

Mode	12V300Ah	24V300Ah
Battery		
Normal Voltage	12.8Vdc	25.6Vdc
Voltage Range	11.2~14.4Vdc	22.4~28.8Vdc
Capacity	3840Wh	7680Wh
Max. Discharge Current	150A	150A
Max. Charge Current	100A	100A
Battery Type	Li-ion(LFP)	Li-ion (LFP)
Operation Condition		
Charging Temperature	0~55℃	0~55℃
Discharging Temperature	-20~55℃	-20~55℃
Storage Temperature	-20~45℃	-20~45℃
Humidity	<95%	<95%
Cooling Down Strategy	Natural heat dissipation	Natural heat dissipation
Installation Method	Floor-standing	Floor-standing
Weight	27.2kgs	54.2kgs
Product Size (W*D*H)	375*195*251.5mm	440*340*240mm
Packaging	Carton	Carton
IP Rating	IP65	IP65
Warranty	3 Years	3 Years

## High Voltage Battery



Home



Stackable



High voltage battery

## Main Features

- ABS material and traditional technology
- Support parallel to expand capacity.
- Long lifespan, 6000 cycles.
- 3 years warranty.



## Energy Storage Li-ion Battery

Items	Specification
Product Name	Lithium Iron Phosphate Module
Module Model	TB14336
Battery Type	LFP 16S
Nominal Capacity	14.336kWh
Usable Capacity	13.619kWh
Nominal Voltage	51.2V
Working Voltage	44.8Vdc ~58.4Vdc
Charging Voltage	58.4V
Max. Charge Current	200A
Max. Discharge Current	200A
Communication	RS485 ,
Storage Temperature	-10°C~50°C (Recommended)
Storage Humidity	≤85%
Working Temperature	Charging: 0°C ~ 50°CDischarging: -20°C ~ 60°C
Working Humidity	≤95%
Working Altitude	≤2000m
Ingress Protection	IP55
Protective Class	1
Weight	105kg
Design Life	5 Years (25°C)
Cycle Life	> 6000 (25°C),80% EOL
Scalability	Supporting Parallel or series connection for large capacity
Certification	CE, IEC62619, UN38.3 (upcoming)

## E-bike Lithium Battery



E-Bike



Battery

## Main Features

- ABS material and traditional technology
- Support parallel to expand capacity.
- Long lifespan, 6000 cycles.
- 3 years warranty.

## E-bike Battery

Mode	48V 20Ah	48V 40Ah	60V 40Ah	72V 40Ah
Battery Type	Li-ion (LFP)			
Nominal Capacity	1.024kWh	2.048kWh	2.56kWh	3.072kWh
Usable Capacity	0.973kWh (95% DOD)	1.946kWh (95% DOD)	2.432kWh (95% DOD)	2.918kWh (95% DOD)
Nominal Voltage	51.2V	51.2V	64V	76.8V
Working Voltage	44.8Vdc ~58.4Vdc	44.8Vdc ~58.4Vdc	56Vdc ~73Vdc	67.2Vdc ~86.4Vdc
Charging Voltage	58.4V	58.4V	73V	86.4V
Max. Charge Current	10A	20A	20A	20A
Max. Discharge Current	40A	60A	60A	60A
Storage Temperature	-10°C~35°C (Recommended)			
Storage Humidity	≤85% (RH)			
Working Temperature	Charging: 0°C ~ 50°C Discharging: -20°C ~ 60°C			
Working Humidity	≤95% (RH) No Condensation			
Working Altitude	≤2000m			
Ingress Protection	IP54			
Protective Class	1			
Weight	11kg	19kg	22kg	25kg
Design Life	2 Years (25°C)			
Cycle Life	> 2500 (25°C), 80% EOL			
Certification	CE, IEC62619, UN38.3 (upcoming)			



Factory



Stackable



Battery



Customization

## Main Features

- ABS material and traditional technology
- Support parallel to expand capacity.
- Long lifespan, 10000 cycles.
- 3 years warranty.

## Commercial energy storage

Mode	409.6V 304Ah High Voltage Battery
Energy	124.5KWh
Installation Type	Stackable
Battery type-Chemistry	LiFePO4
Nominal Voltage	409.6V
Nominal Capacity	304Ah
Continuous Charging rate	0.5C
Continuous Discharge rate	0.5C
Max. continuous charging rate	1C
Max. continuous discharge rate	1C
Terminal Type	Terminal post
Terminal Torque	7.8~9.8N.m
Case Material	SPCC
External BMU	Yes
Internal Resistance	<120mΩ
Efficiency - round trip	>99%
Self Discharge per Month	<3%
Cycle life (0.5C,25C@80% DOD)	10000Cycles
Discharge Temperature	(-20°C to 65°C)
Charge Temperature	(0°C to 55°C)
Storage Temperature	(-20°C to 65°C)
Bluetooth(App)	Optional
LCD Screen	Optional
Heating Function	Optional
Voltage Range	345.6-467.2V
Max Charge Voltage	467.2V
Max. Charge Current	250A
Discharge Voltage	345.6V
Max. Discharge Current	250A
HVB Characteristics (For single one)	
Primary Charging Protection	Current:260A Delay Time:1000ms
Second Charging Protection	Current:300A Delay Time:500ms
Primary Discharging Protection	Current:260A Delay Time: 7.8s ±2s
Second Discharging Protection	Current :280A Delay Time:3.2s ±1s
Third Discharging Protection	Current :300A Delay Time:1.2s ±0.5s
Short circuit protection	Current :600A Delay Time:380us ±76us
Over charge Voltage protection	Voltage:444V Delay Time:1000ms
Over Discharge Voltage protection	Voltage:312V Delay Time:1000ms
Temperature Protection	PCB temperature:90°C±5°C Recover<85°C
	Charge high temperature:60°C±5°C Recover<55°C
	Discharge high temperature:70°C±5°C Recover<65°C
	Charge low temperature:-5°C±5°C Recover>0°C
	Discharge low temperature:-19°C±5°C Recover>-14°C
Communication Port	RS485,CAN,DRY CONTACT



Individualized technical customization and production can be achieved according to customer specific requirements.



**50KW/75KWh**



**100KW/150KWh**



**150KW/225KWh**



**200KW/300KWh**

# TIGFOX

## GLOBAL BRAND, LOCAL TEAM, LOCAL

### Group Affiliated Companies

- Dongguan CHY Battery Technology Co., Ltd
- Hunan CHY New Energy Co., Ltd.
- Hunan Enerfox Energy Technology Co., Ltd.
- CHY (HK) Industrial Development Co., Ltd.
- TI-FOX (HK) TECHNOLOGY CO., LIMITED
- CHY Power SA (PTY) Ltd.
- TIGFOX Power (PVT.) Ltd.

### Gloobal After-sales Center

- No. 2 Qinghe Road, Huangjingkeng Village, Huangjiang Town, Dongguan City, Guangdong Province, China
- 1st Floor, Building 4, Electronic Information Industrial Park, Economic Development Zone, Jishou City, Xiangxi Autonomous Prefecture, Hunan Province, China
- 4th Floor, Building 4, Electronic Information Industrial Park, Economic Development Zone, Jishou City, Xiangxi Autonomous Prefecture, Hunan Province, China
- Units 1260, 12/F, Emperor Group Centre, 288 Hennessy Road, Wan Chai, Hong Kong
- Unit 4 Gallagher Place South, 54 Richards Dr, Halfway House, Midrand 1685, Johannesburg, South Africa
- Mezban Hotel Building, Opp. Meezan Bank;Regal Chowk. Preedy Street,Saddar, Karachi, Pakistan
- Lockwood Return Center 3980 Valley Blvd Ste D Walnut,CA91789, USA
- Doree Supplies B.V. Pascalweg 9E, 4104 BE Culemborg, the Netherlands
- Kronenweg 16, 50389 Wesseling Deutschland

CONTACT US



**Website:** [www.tigfox.com](http://www.tigfox.com)

**Email:** [peter@aisun-power.com](mailto:peter@aisun-power.com)